

Discover the Perfect Venue

2019 GUIDE TO NEPALESE RETREAT VENUES

For Your Next Retreat



RETREATS AND VENUES



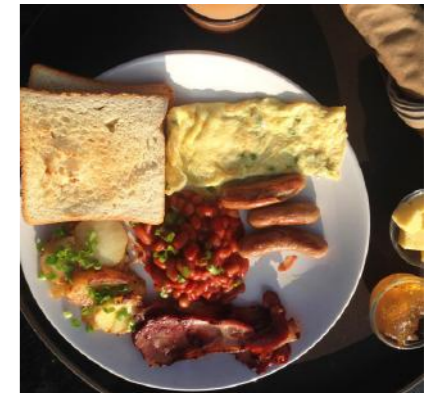
Contents

02 - 03 Contents

04 Nepal

05 - 07 Venues & Resorts

08 Contact Us



*Discover leading retreats,
stunning venues
and welcoming hosts
AROUND THE WORLD*



RETREATS AND VENUES

510 W Hastings St, Vancouver, BC V6B 1L
Phone: +1 604 779-1459 Email: matt@retreatsandvenues.com
www.retreatsandvenues.com



Discover Your Next Retreat

NEPAL

Discover leading retreats, stunning venues and welcoming hosts around the world



Vedic Arogya Ashram

30 PEOPLE

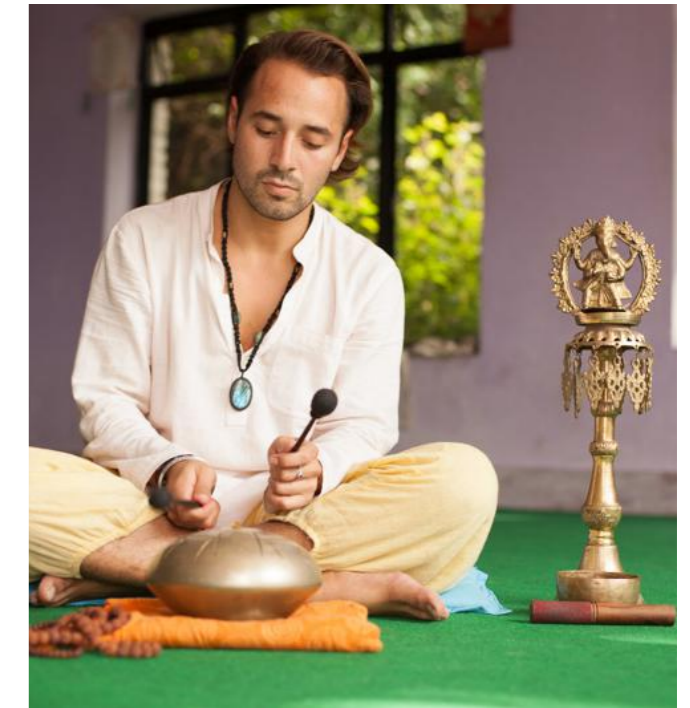
4 ROOMS

KATHMANDU

RETREAT CENTER

KATHMANDU, NEPAL

The Vedic Arogya Ashram is located in a beautiful and peaceful place next to Godaveri National Botanical Gardens in Kathmandu Valley. The forested surroundings and views of the colorful hills offer an ideal atmosphere for the practice of yoga and meditation. We are located in the middle of a green area without cars or motorbikes, in a clean and quiet natural setting. We are lucky to be able to enjoy the Himalayas from our Ashram in the early morning.



www.vedicashram.org.np

Nepal Yoga Home, Goldhunga, Kathmandu, Nepal

35 PEOPLE

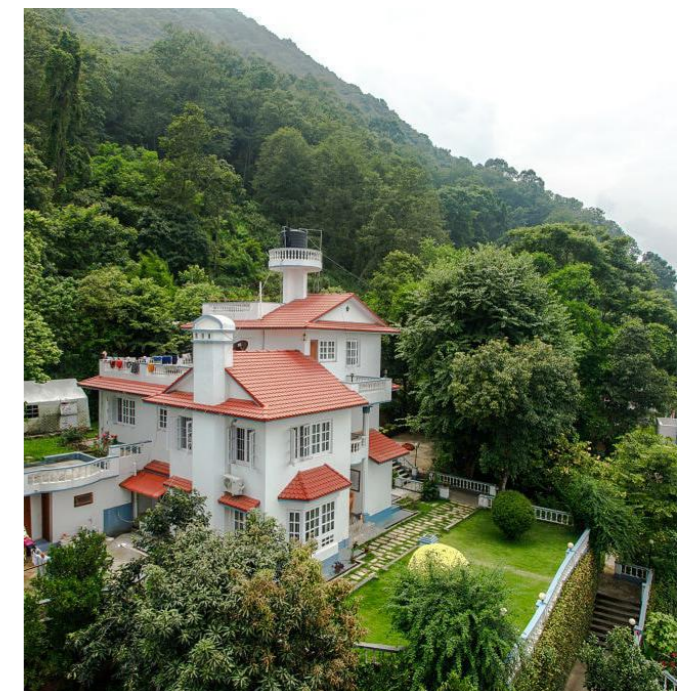
25 ROOMS

KATHMANDU

RETREAT CENTER

KATHMANDU, NEPAL

Nepal Yoga Home is one of the pioneer yoga school in Nepal with its outstanding performance and spiritual life-changing environment to offer all the yoga aspirants from around the world. As a true trail-blazing institution in the field of yoga in Nepal, It offers various courses ranging from beginners level to advanced level yoga courses. It is located just 5 kilometers from the Kathmandu (city of temples).



www.nepalyogahome.com

Himalayan Yoga Resort

 23 PEOPLE

 10 ROOMS

 KATHMANDU

 RETREAT CENTER

Here at Himalayan yoga resort, we aim to divulge your source of delight, the spirit, the Satyam(truthful), Sundaram(beautiful) and anandam(blissful) who is beyond and the basis of all this worldwide activity, evolution, and progress. We invite you to the land of Himalayas, to Shiva's abode, come and bless yourself with a never-ending stream of the boon of nature, spirituality, and yoga. The nearby Nagarjun Green hill range with its pure oxygen-rich fresh air is guaranteed to invigorate your whole being.



 KATHMANDU, NEPAL

 www.yogainnepal.com/

Chhahari Retreat

 20 PEOPLE

 10 ROOMS

 KATHMANDU

 ECO VILLAGE

 KATHMANDU, NEPAL

Nestled in the lap of the Shivapuri hills, bordering the wildlife and flora rich - Shivapuri National Park, Chhahari does not do things differently. It does different things. At this quaint boutique getaway, you will not find uniformed staffs or extravagant four-course meals. No phone calls to disturb your siesta, nor a television to distract your thoughts. A fantastic retreat, organic haven, powered by alternative energy, offering panoramic views of the valley and introducing you to a more wholesome lifestyle.



 [instagram.com/chhahari.retreat/](https://www.instagram.com/chhahari.retreat/)

 www.chhahari-retreat.com

Himalayan Yogini Retreat

 8 PEOPLE

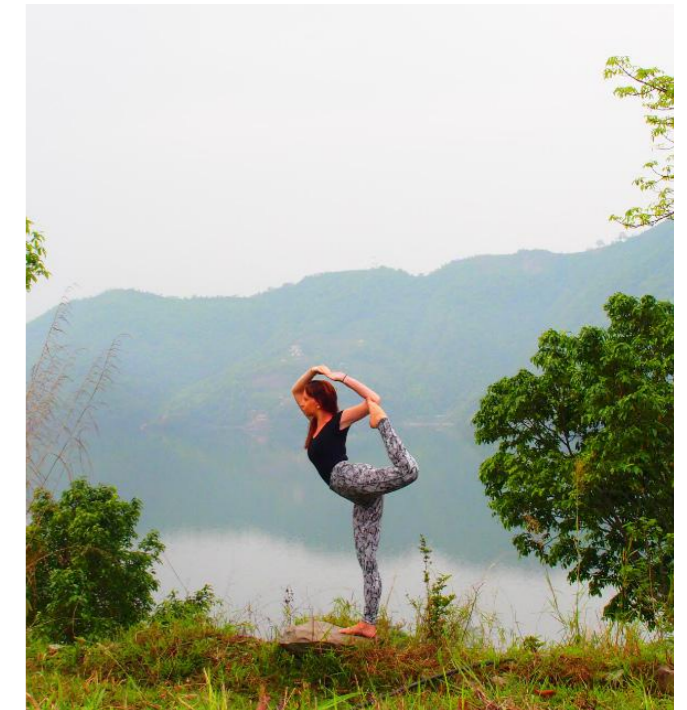
 4 ROOMS

 KATHMANDU

 RETREAT CENTER

 POKHARA, NEPAL

Himalayan Yogini is a Registered Yoga School 200 hours with Yoga alliance. we offer RYT200 teacher training, Yoga Classes, Courses, Retreats and Self Healing In Pokhara Nepal. It includes organic farm, super adobe dome, organic home cooking, small class size, locally sourced food, traditional family owned and operated. Yoga alliance certification, yoga healing, sound bowl healing, yoga trekking, access to Devika Gurung.



 [facebook.com/himalayanyoginipkr/](https://www.facebook.com/himalayanyoginipkr/)

Temple Tree Resort & Spa

 RESORT

 68 ROOMS

 POKHARA

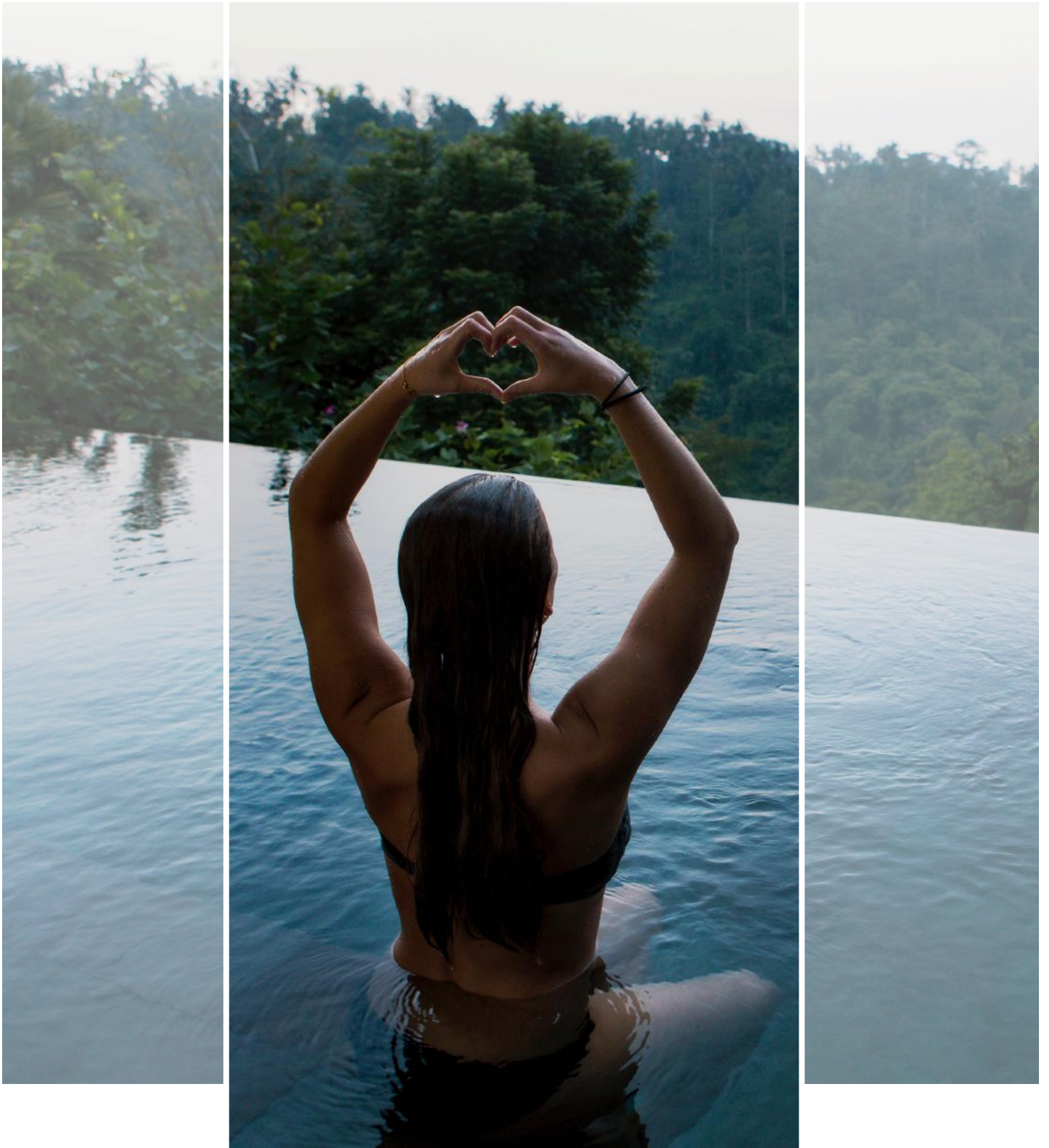
 POKHARA, NEPAL

Temple Tree Resort & Spa is a boutique hotel combining western standards with the distinctive architecture and culture of Nepal's Western Himalayas. Named after the fragrant temple tree plant frangipani found here, we offer a peaceful and relaxed atmosphere, privacy when preferred and attentive service. The resort is ideally located right at the centre of the Lakeside in an area called Gaurighat, the only stretch of the Lakeside enjoying a full view of the lake as well as the Himalayas.



 [instagram.com/omatcheshwill/](https://www.instagram.com/omatcheshwill/)

 omatcheshwill.com/



RETREATS AND VENUES

510 W Hastings St, Vancouver, BC V6B 1L

Email: matt@retreatsandvenues.com

retreatsandvenues.com

© RETREATSANDVENUES A ThriveNetwork Company